

## AIRCRAFT TIRE SIZES AND CIMA PRESS FITTING

<b>TIRE SIZE</b>	<b>PRESS MODEL</b>	<b>PRESS CAVITY</b>
20X5.5X10	RP0	605X200
22X6.75X10	RP0	605X200
24X7.7X10	RP1H	695X230
H31X13.0X12	RP2HHS	880X380
24X5.5X14	RP1H	695X230
26X6.6X14	RP1H	695X230
28X7.7X14	RP2H	830X280
30X11.50X14	RP2HHS	880X380
34X11X14	RP3H	980X350
40X16X14	RP5H	1170X460
27X7.75X15	RP2H	830X280
30X8.8X15	RP2H	830X280
32X11.50X15	RP2HHS	880X380
H37X14.0X15	RP3H	980X350
1050X395X16	RP5H	1170X460
36X11X16	RP3H	980X350
40X14X16	RP5H	1170X460
40X15.5X16	RP5H	1170X460
H30X9.5X16	RP2H	830X280
41X15.0X18	RP5H	1170X460
44.5X16.5X18	RP5HS	1250X460
44X16X18	RP5HS	1250X460
H40X14.5X19	RP5H	1170X460
H41X15.0X19	RP5H	1170X460
46X16X20	RP5HS	1250X460
46X17X20	RP5,5HH	1370X530
49X17X20	RP5,5HH	1370X530
49X19.0X20	RP5,5HH	1370X530
50X21.0X20	RP5,5HH	1370X530
H44.5X16.5X20	RP5H	1170X460
H46X18X20	RP5HS	1250X460
H44.5X16.5X21	RP5H	1170X460
1270X455X223	RP6	1550X600
50X20X22	RP6	1550X600
H49X19.0X22	RP5,5HH	1370X530
1400X530X23	RP6	1550X600
52X20.5X23	RP6	1550X600
H54X21.0X24	RP6	1550X600

## RP 0 T - RP 1 HT (AIRCRAFT)



electric heating

INFLATION PRESSURE AVAILABLE STANDARD 16 bar ON REQUEST 19 OR 23 bar				
INFLATION FLUID	AIR		HEATING	STEAM
	AIR-STEAM			
	NITROGEN			
	NITROGEN-STEAM			
	HOT NITROGEN			
			RP 0 T	RP 1 HT
DIAMETER OF THE CAVITY	mm		605	695
HEIGHT OF THE CAVITY	mm		190/200	190/230
MAX TYRE O.D.	mm		575	665
MAX TYRE C.S.	mm		185	210

SIZES RETREADABLE	RP 0 T		RP 1 HT	
		5.00 - 5	6.00 - 6	7.50 - 10
	6.50 - 8	6.50 - 10	(8.50 - 6)	H22x8.25 - 10
	7.00 - 6	7.25 - 6	22x8.5 - 11	23x7.00 - 12
	14.5x5.5 - 6	16x4.4	24x5.5	24x6.6
	17.5x5.75 - 8	17.5x6.25 - 6	24x7.25 - 12	24x7.7
	18x4.25 - 10	18x4.4	24x8.00 - 13	24.5x8.5
	18x5.5	18x5.7 - 8	25x6.75	25.5x8.0 - 14
	18x6.5 - 8	19x6.75 - 8	25.5x8.75 - 10	25.75x6.75 - 14
	20x4.4	20x5.25 - 11	26x6.6	(26x7.75 - 13)
	H21x7.25 - 8	21x7.25 - 10	(26x7.75 - 13)	26x8.0 - 14
	22x5.5	22x5.75 - 12	(26.5x8.0 - 13)	
	22x6.5 - 10	22x6.75 - 10		

**RP 2 HT - RP 2 HHST (AIRCRAFT)**



A & B configuration

INFLATION PRESSURE AVAILABLE STANDARD 16 bar ON REQUEST 19 OR 23 bar			
INFLATION FLUID	AIR	HEATING	STEAM
	AIR-STEAM		
	NITROGEN		
	NITROGEN-STEAM		
	HOT NITROGEN		
			ELECTRICITY
		<b>RP 2 HT</b>	<b>RP 2 HHST</b>
DIAMETER OF THE CAVITY	mm	830	880
HEIGHT OF THE CAVITY	mm	230/280	320/380
MAX TYRE O.D.	mm	800	850
MAX TYRE C.S.	mm	260	360

SIZES RETREADABLE	(8.50 - 6)	(9.50 - 16)
	8.50 - 10	11.00 - 12
	9.00 - 6	30x11.5 - 14.5
	9.00 - 10	31x10.75 - 14
	9.25 - 12	31x11.50 - 16
	23x9.00 - 8	23x7.00 - 12
	25.5x8.75 - 10	H31x13.0 - 12
	(26x7.75 - 13)	32x10.75 - 14
	26x8.75 - 11	32x11.5 - 15
	(26.5x8.0 - 13)	33.5x10.75 - 15
	27x7.75 - 15	34x11
	28x9.00 - 12	
	29x7.7	
	29x8.00 - 15	
	H29x9.0 - 15	
	30x7.7	
	30x8.8	
	30x9.00 - 15	
	30x9.5 - 14	
	H30x9.5 - 16	
	H31x9.75 - 13	
	31x9.75 - 14	
	32x8.8	

**RP 3 HT (AIRCRAFT)**



electric heating

INFLATION PRESSURE AVAILABLE STANDARD 18 bar ON REQUEST 23 bar			
INFLATION FLUID	AIR	HEATING	STEAM
	AIR-STEAM		
	NITROGEN		
	NITROGEN-STEAM		
	HOT NITROGEN		
		<b>RP 3 HT</b>	ELECTRICITY
DIAMETER OF THE CAVITY	mm	980	
HEIGHT OF THE CAVITY	mm	300/350	
MAX TYRE O.D.	mm	940	
MAX TYRE C.S.	mm	330	

SIZES RETREADABLE	10.50 - 16
	34x10.75 - 16
	34x11.75 - 14
	H34.5x12.0 - 14
	35x9.00 - 17
	35x10.00 - 17
	36x10.00 - 18
	36x11
	36x13.00 - 12
	37x11.75 - 16
	37x13.0 - 16
	38x11.0

## RP 5 HT (AIRCRAFT)



electric heating

INFLATION PRESSURE AVAILABLE STANDARD 18 bar ON REQUEST 23 bar			
INFLATION FLUID	AIR	HEATING	STEAM
	AIR-STEAM		
	NITROGEN		
	NITROGEN-STEAM		
	HOT NITROGEN		ELECTRICITY
		<b>RP 5 HT</b>	
DIAMETER OF THE CAVITY	mm	1170	
HEIGHT OF THE CAVITY	mm	325/460	
MAX TYRE O.D.	mm	1130	
MAX TYRE C.S.	mm	445	

SIZES RETREADABLE	12.50 - 16	44x16
	13.50 - 16	44.5x16.5 - 18
	15.00 - 12	H44.5x16.5 - 20
	15.00 - 16	H44.5x16.5 - 21
	34x14.00 - 14	
	37x14.0 - 14	
	H37x14.0 - 15	
	H38x12.0 - 19	
	H38x13.0 - 18	
	39x13.0	
	40x12.0	
	40x14.0	
	H40x14.0 - 19	
	H40x14.5 - 19	
	40x15.5 - 16	
	40.5x15.5 - 16	
	41x15.0 - 18	
	H41x15.0 - 19	
	42x13.0 - 18	
	42x15	
	H42x16 - 19	
	43x16.0 - 20	
	H43.5x16.0 - 21	
	44x13	

## RP 5.5 HHT (AIRCRAFT)



A & B configuration

INFLATION PRESSURE AVAILABLE STANDARD 18 bar ON REQUEST 23 bar			
INFLATION FLUID	AIR	HEATING	STEAM
	AIR-STEAM		
	NITROGEN		
	NITROGEN-STEAM		
	HOT NITROGEN		
			ELECTRICITY
		<b>RP 5,5 HHT</b>	
DIAMETER OF THE CAVITY	mm	1370	
HEIGHT OF THE CAVITY	mm	480/530	
MAX TYRE O.D.	mm	1320	
MAX TYRE C.S.	mm	515	

SIZES RETREADABLE	H46x18.0 - 20
	47x15.75 - 22.1
	47x18.0 - 18
	49x17
	49x18.0 - 22
	49x19.0 - 20
	H49x19.0 - 22
	50x18
	50x20.0 - 20
	50x20.5 - 20

**RP 6 T (AIRCRAFT)**



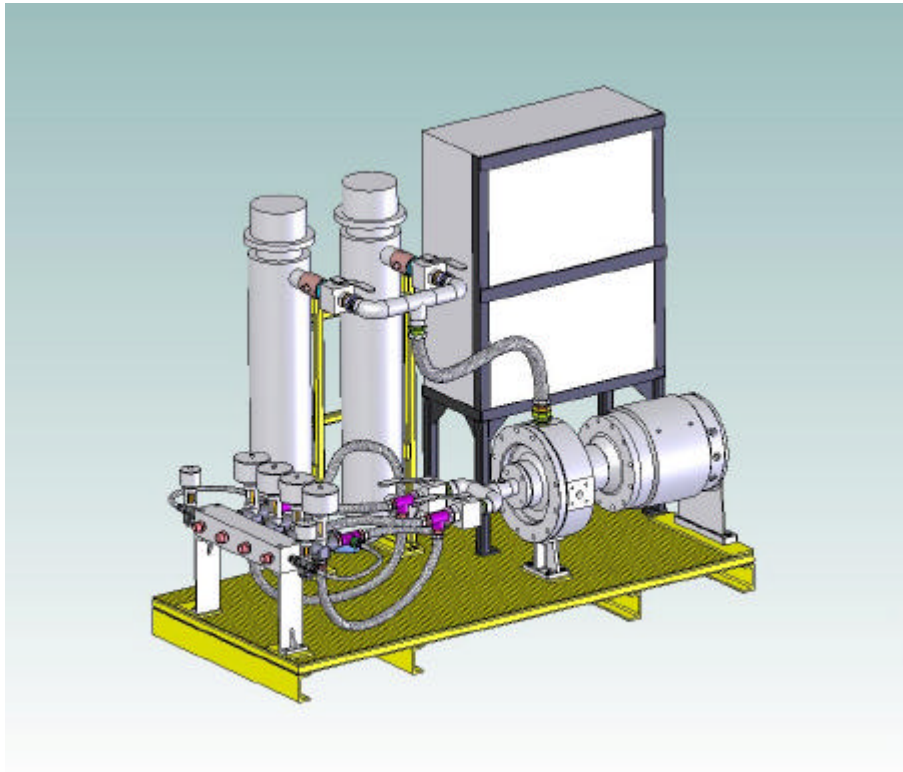
A & B configuration

INFLATION PRESSURE AVAILABLE STANDARD 18 bar ON REQUEST 23 bar			
INFLATION FLUID	AIR	HEATING	STEAM
	AIR-STEAM		
	NITROGEN		
	NITROGEN-STEAM		
	HOT NITROGEN		
			ELECTRICITY

		<b>RP 6 T</b>
DIAMETER OF THE CAVITY	mm	1550
HEIGHT OF THE CAVITY	mm	550/600
MAX TYRE O.D.	mm	1490
MAX TYRE C.S.	mm	580

SIZES RETREADABLE	52x20.5 - 23
	54x21.0 - 23
	H54x21.0 - 24
	56x20.0 - 20

# NITROGEN SYSTEM



INFLATION PRESSURE UP TO 25 bar  
HEATING TEMPERATURE 160°C

